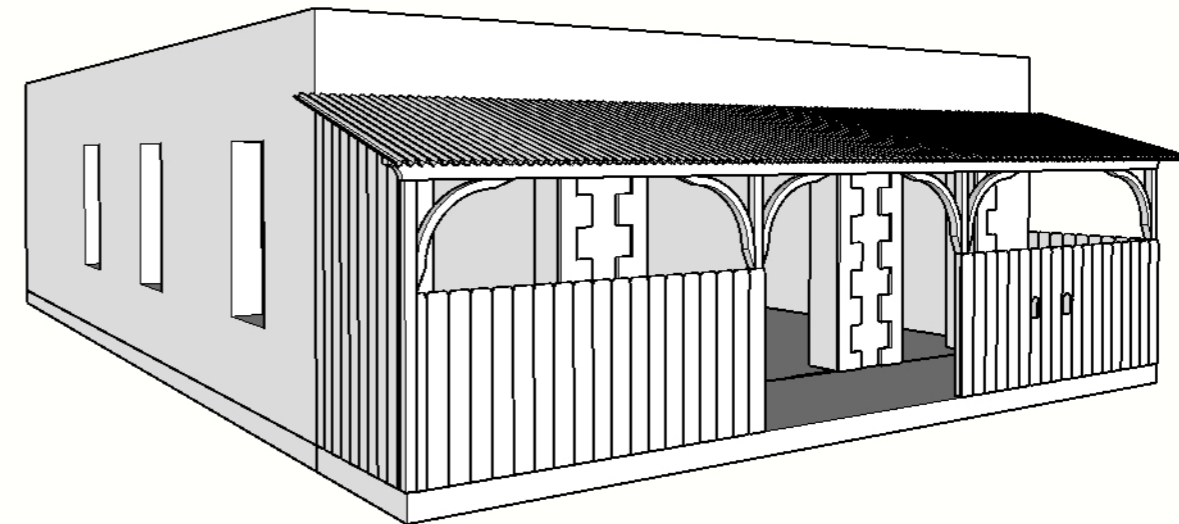
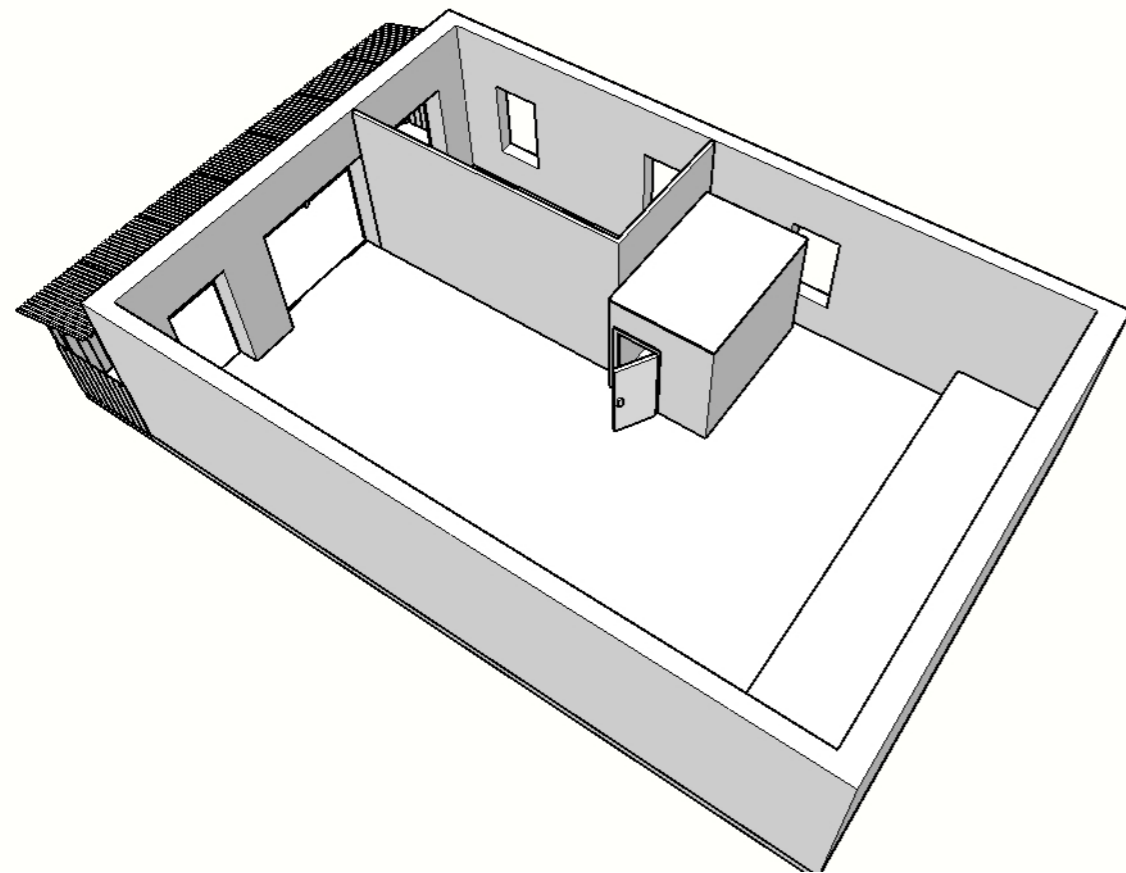
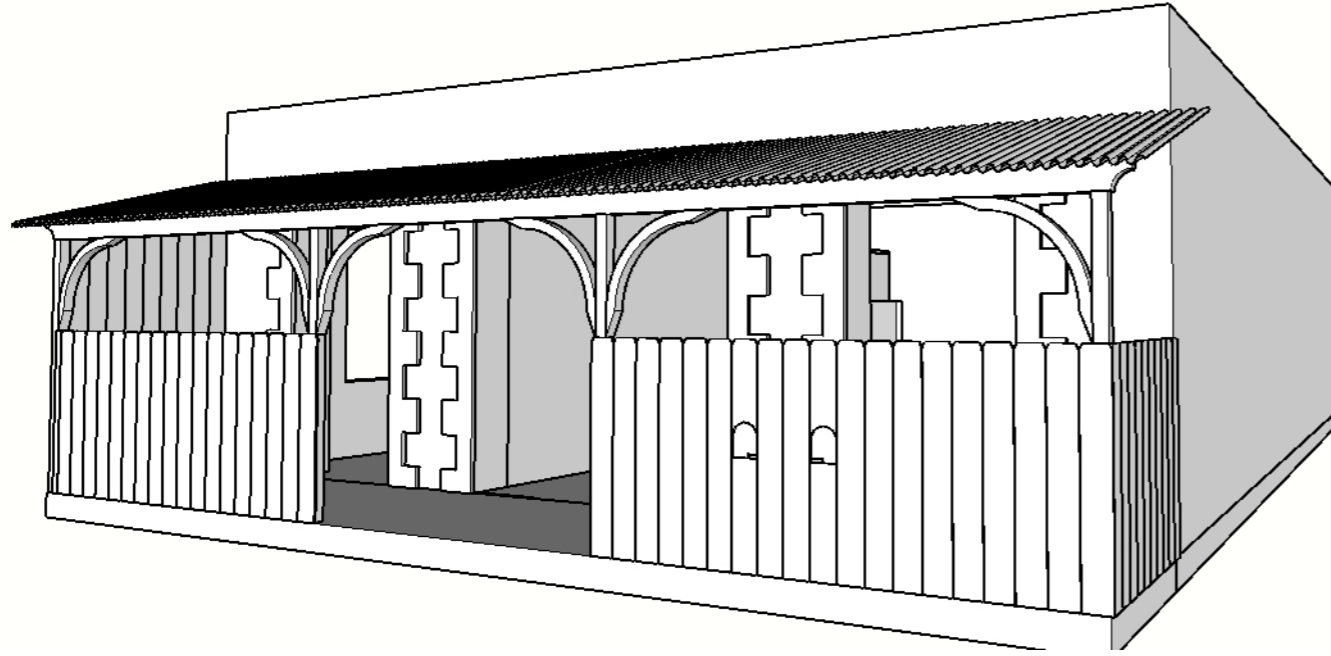
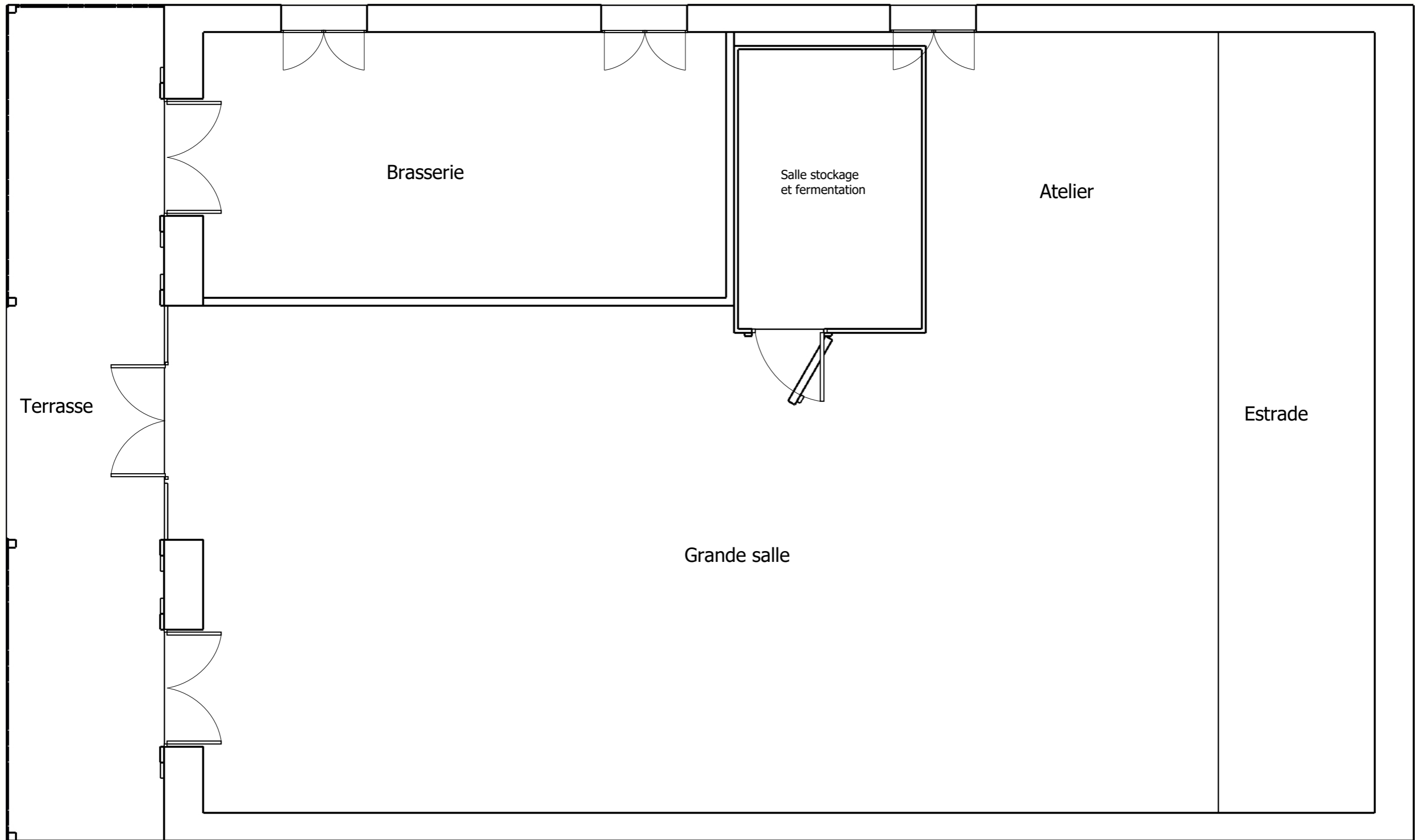


Projet Brasserie associative

Brass de L'Eyre



15 place du 8 mai 1945 33180 MIOS	Brass de l'eyre
Page de Garde	Echelle 1:50
	mars 11, 2024



15 place du 8 mai 1945 33180 MIOS	Brass de l'eyre
Plan de base	Echelle 1:50
	mars 11, 2024

1800 cm

200 cm

Brasserie
22,78m²

670 cm

340 cm

Salle stockage
et fermentation
8,42m²

358 cm

349 cm

Atelier
13,12m²

375 cm

Estrade
20m²

1000 cm

10,70 m

235 cm

5 cm

Terrasse
21,4m²

10 cm

650 cm

Grande salle
84,5m²

1300 cm

200 cm

50 cm

Accès Portail / Rue

Surface Totale batiment : 150 m²
 Surface production : 22.78 m²
 Surface stockage : 8.42 m²

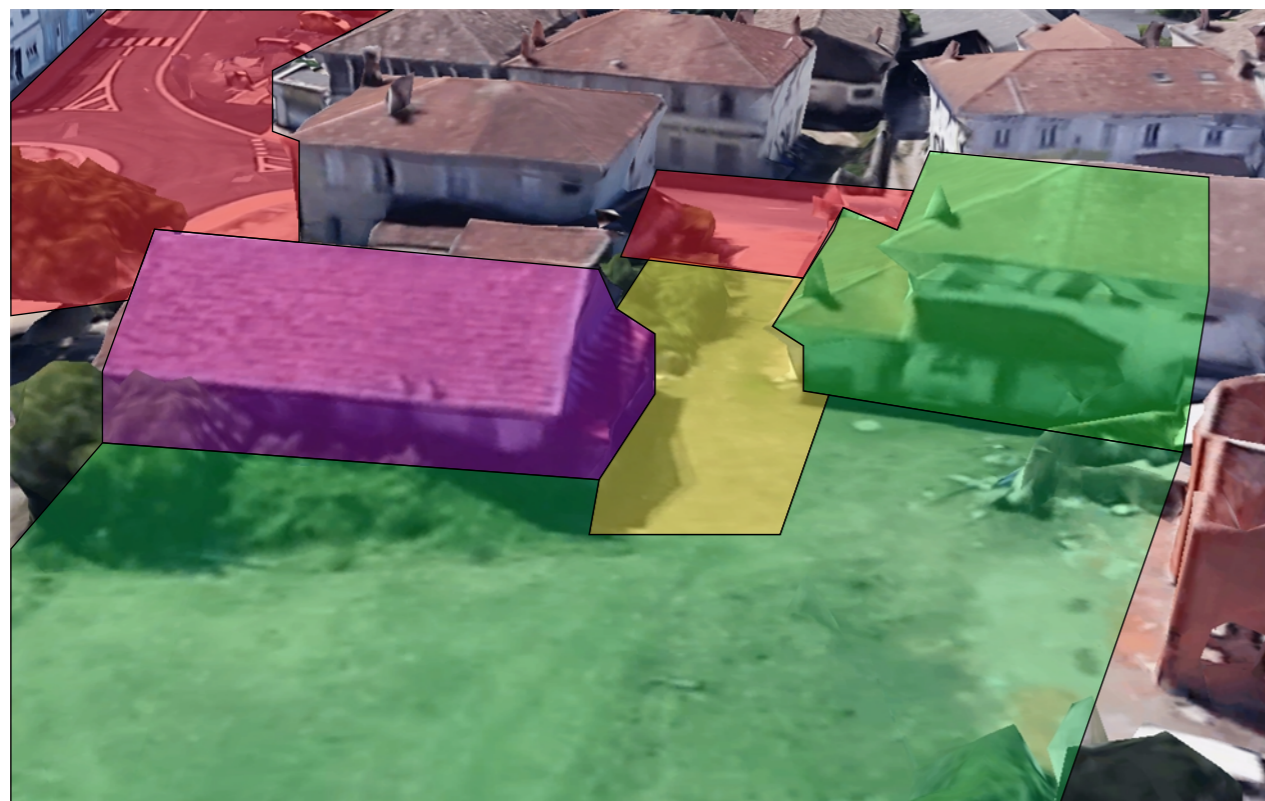
15 place du 8 mai 1945 33180 MIOS	Brass de l'eyre
Plan + cotation	Echelle 1:50
	mars 11, 2024



- Voie public
- Zone accès
- Zone habitation
- Local brasserie



VUE 3D GoolgeEarth



Répartition zone accessibilité projet brasserie associative